



**INTERNATIONAL
GEMOLOGICAL
INSTITUTE**

LABORATORY GROWN DIAMOND REPORT

IGI LABORATORY GROWN DIAMOND IDENTIFICATION REPORT

September 8, 2022
 IGI Report Number LG542226131
 Description LABORATORY GROWN DIAMOND
 Shape and Cutting Style HEART BRILLIANT
 Measurements 5.34 X 6.35 X 4.21 MM

GRADING RESULTS

Carat Weight 0.90 CARAT
 Color Grade FANCY PINK
 Clarity Grade VVS 2

ADDITIONAL GRADING INFORMATION

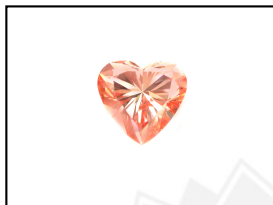
Polish EXCELLENT
 Symmetry EXCELLENT
 Fluorescence SLIGHT
 Inscription(s) LABGROWN IGI LG542226131

Comments: This Laboratory Grown Diamond was created by Chemical Vapor Deposition (CVD) growth process. Indications of post-growth treatment.

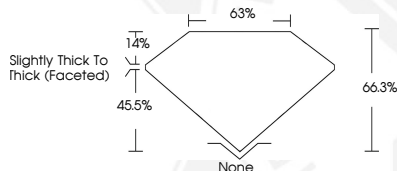
ELECTRONIC COPY

**LABORATORY GROWN
DIAMOND REPORT**

LG542226131



LASERSCRIBESM
Sample Images Used



**IGI LABORATORY GROWN
DIAMOND ID REPORT**

September 8, 2022
 IGI Report Number **LG542226131**
HEART BRILLIANT
5.34 X 6.35 X 4.21 MM
 Carat Weight 0.90 CARAT
 Color Grade FANCY PINK
 Clarity Grade VVS 2
 Polish EXCELLENT
 Symmetry EXCELLENT
 Fluorescence SLIGHT
 Inscription(s) LABGROWN IGI
 LG542226131

Comments: This Laboratory Grown Diamond was created by Chemical Vapor Deposition (CVD) growth process. Indications of post-growth treatment.

**IGI LABORATORY GROWN
DIAMOND ID REPORT**

September 8, 2022
 IGI Report Number **LG542226131**
HEART BRILLIANT
5.34 X 6.35 X 4.21 MM
 Carat Weight 0.90 CARAT
 Color Grade FANCY PINK
 Clarity Grade VVS 2
 Polish EXCELLENT
 Symmetry EXCELLENT
 Fluorescence SLIGHT
 Inscription(s) LABGROWN IGI
 LG542226131

Comments: This Laboratory Grown Diamond was created by Chemical Vapor Deposition (CVD) growth process. Indications of post-growth treatment.

THIS DOCUMENT WAS PRODUCED WITH THE FOLLOWING SECURITY MEASURES: SPECIAL DOCUMENT PAPER, INK SCREENS, WATERMARK, BACKGROUND DESIGN, HOLOGRAM AND OTHER SECURITY FEATURES NOT LISTED AND DO EXCEED DOCUMENT SECURITY INDUSTRY GUIDELINES.

For terms & conditions and to verify this report, please visit www.igi.org