

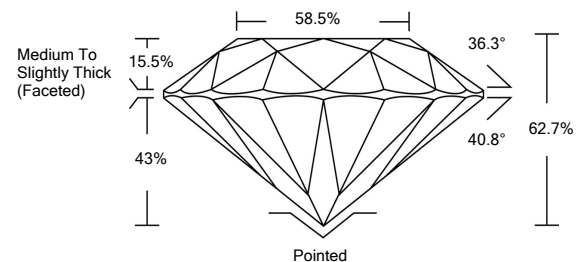


ELECTRONIC COPY

LABORATORY GROWN DIAMOND REPORT

LG532264291

PROPORTIONS



GRADING SCALES

COLOR GRADING SCALE	CL	NC	FT	VL	LT	
	COLORLESS D-F	NEAR COLORLESS G-J	FAINT K-M	VERY LIGHT N-R	LIGHT S-Z	
CLARITY (10x) GRADING SCALE	FL	IF	VVS	VS	SI	I
	FLAWLESS INTERNALLY FLAWLESS	VERY VERY SLIGHTLY INCLUDED	VERY SLIGHTLY INCLUDED	SLIGHTLY INCLUDED	INCLUDED	

June 4, 2022

IGI Report Number

LG532264291

Description

**LABORATORY GROWN
DIAMOND**

Shape and Cutting Style

ROUND BRILLIANT

Measurements

8.59 - 8.62 X 5.40 MM

GRADING RESULTS

Carat Weight

2.51 CARATS

Color Grade

E

Clarity Grade

VVS 2

Cut Grade

EXCELLENT

June 4, 2022

IGI Report Number

LG532264291

Description

**LABORATORY GROWN
DIAMOND**

Shape and Cutting Style

ROUND BRILLIANT

Measurements

8.59 - 8.62 X 5.40 MM

GRADING RESULTS

Carat Weight

2.51 CARATS

Color Grade

E

Clarity Grade

VVS 2

Cut Grade

EXCELLENT

ADDITIONAL GRADING INFORMATION

Polish

EXCELLENT

Symmetry

EXCELLENT

Fluorescence

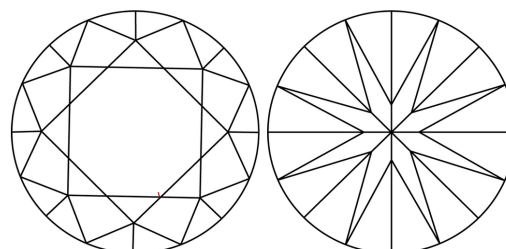
NONE

Inscription(s)

LABGROWN IGI LG532264291

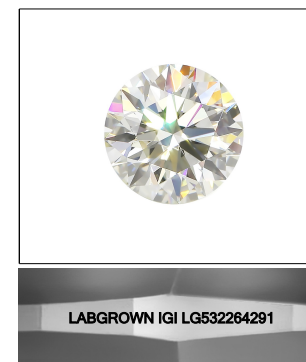
Comments: This Laboratory Grown Diamond was created by Chemical Vapor Deposition (CVD) growth process and may include post-growth treatment.
Type IIa

CLARITY CHARACTERISTICS



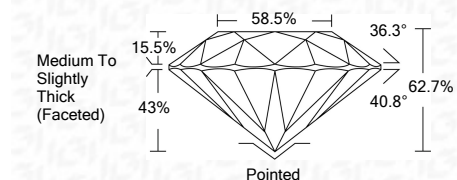
KEY TO SYMBOLS

Red symbols indicate internal characteristics.
Green symbols indicate external characteristics.



LASERSCRIBESM

Sample Image Used



ADDITIONAL GRADING INFORMATION

Polish

EXCELLENT

Symmetry

EXCELLENT

Fluorescence

NONE

Inscription(s)

LABGROWN IGI LG532264291

Comments: This Laboratory Grown Diamond was created by Chemical Vapor Deposition (CVD) growth process and may include post-growth treatment.
Type IIa



IGI

IGI Report No. LG532264291	2.51 CARATS	E	Pointed
ROUND BRILLIANT	VVS 2	EXCELLENT	EXCELLENT
8.59 - 8.62 X 5.40 MM	EXCELLENT	EXCELLENT	EXCELLENT
Carat Weight	82.7%	NONE	LABGROWN IGI
Color Grade	58.5%	LABGROWN IGI	LG532264291
Clarity Grade	Medium To Slightly Thick (Faceted)		
Cut Grade			
Depth			
Table			
Girdle			
Culet			
Polish			
Symmetry			
Fluorescence			
Inscription(s)			

Comments: This Laboratory Grown Diamond was created by Chemical Vapor Deposition (CVD) growth process and may include post-growth treatment.
Type IIa