



**ELECTRONIC COPY**

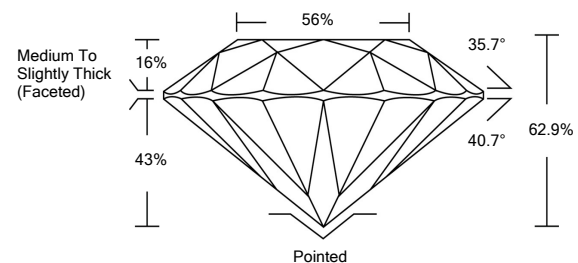
**LABORATORY GROWN DIAMOND REPORT**

April 4, 2022	
IGI Report Number	<b>LG522231810</b>
Description	<b>LABORATORY GROWN DIAMOND</b>
Shape and Cutting Style	<b>ROUND BRILLIANT</b>
Measurements	<b>6.70 - 6.75 X 4.23 MM</b>
<b>GRADING RESULTS</b>	
Carat Weight	<b>1.20 CARAT</b>
Color Grade	<b>D</b>
Clarity Grade	<b>VVS 2</b>
Cut Grade	<b>EXCELLENT</b>
<b>ADDITIONAL GRADING INFORMATION</b>	
Polish	<b>EXCELLENT</b>
Symmetry	<b>EXCELLENT</b>
Fluorescence	<b>NONE</b>
Inscription(s)	<b>LABGROWN IGI LG522231810</b>

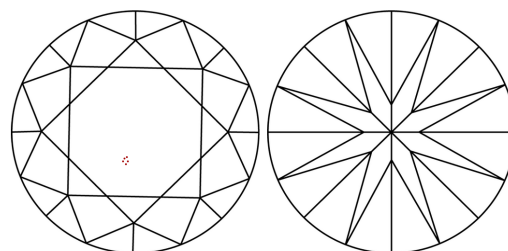
Comments: As Grown - No indication of post-growth treatment.  
This Laboratory Grown Diamond was created by High Pressure High Temperature (HPHT) growth process.  
Type II

LG522231810

**PROPORTIONS**



**CLARITY CHARACTERISTICS**



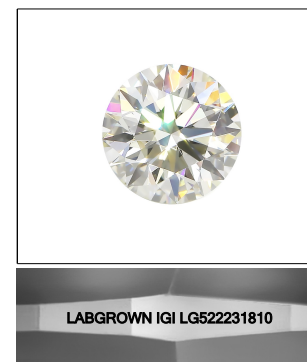
**KEY TO SYMBOLS**

Red symbols indicate internal characteristics.  
Green symbols indicate external characteristics.

**LABORATORY GROWN  
DIAMOND REPORT**

**GRADING SCALES**

COLOR GRADING SCALE	CL	NC	FT	VL	LT	
	COLORLESS D-F	NEAR COLORLESS G-J	FAINT K-M	VERY LIGHT N-R	LIGHT S-Z	
CLARITY (10x) GRADING SCALE	FL	IF	VVS	VS	SI	I
	FLAWLESS INTERNALLY FLAWLESS	VERY VERY SLIGHTLY INCLUDED	VERY SLIGHTLY INCLUDED	SLIGHTLY INCLUDED	INCLUDED	

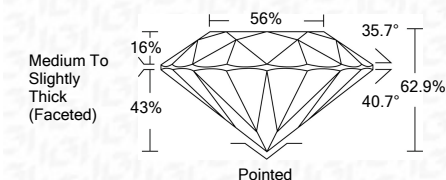


**LASERSCRIBE<sup>SM</sup>**

Sample Image Used

**LABORATORY GROWN DIAMOND REPORT**

April 4, 2022	
IGI Report Number	<b>LG522231810</b>
Description	<b>LABORATORY GROWN DIAMOND</b>
Shape and Cutting Style	<b>ROUND BRILLIANT</b>
Measurements	<b>6.70 - 6.75 X 4.23 MM</b>
<b>GRADING RESULTS</b>	
Carat Weight	<b>1.20 CARAT</b>
Color Grade	<b>D</b>
Clarity Grade	<b>VVS 2</b>
Cut Grade	<b>EXCELLENT</b>



**ADDITIONAL GRADING INFORMATION**

Polish	<b>EXCELLENT</b>
Symmetry	<b>EXCELLENT</b>
Fluorescence	<b>NONE</b>
Inscription(s)	<b>LABGROWN IGI LG522231810</b>

Comments: As Grown - No indication of post-growth treatment.  
This Laboratory Grown Diamond was created by High Pressure High Temperature (HPHT) growth process.  
Type II



**IGI**



April 4, 2022	
IGI Report No. LG522231810	
<b>ROUND BRILLIANT</b>	
<b>6.70 - 6.75 X 4.23 MM</b>	
Carat Weight	<b>1.20 CARAT</b>
Color Grade	<b>D</b>
Clarity Grade	<b>VVS 2</b>
Cut Grade	<b>EXCELLENT</b>
Depth	<b>43%</b>
Table	<b>16%</b>
Girdle	<b>Medium To Slightly Thick (Faceted)</b>
Culet	<b>Pointed</b>
Polish	<b>EXCELLENT</b>
Symmetry	<b>EXCELLENT</b>
Fluorescence	<b>NONE</b>
Inscription(s)	<b>LABGROWN IGI LG522231810</b>
<p>Comments: As Grown - No indication of post-growth treatment. This Laboratory Grown Diamond was created by High Pressure High Temperature (HPHT) growth process. Type II</p>	