

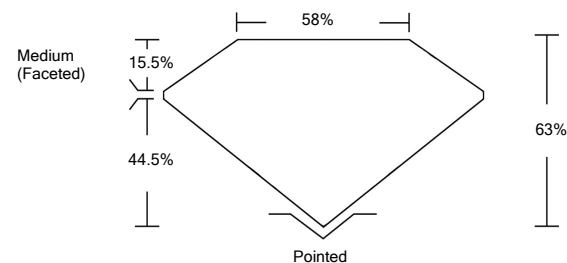


ELECTRONIC COPY

LABORATORY GROWN DIAMOND REPORT

LG517285456

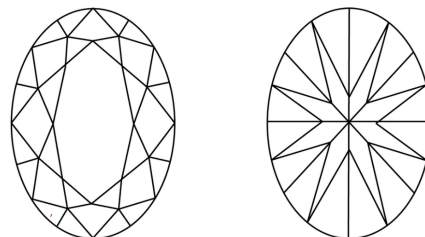
PROPORTIONS



GRADING SCALES

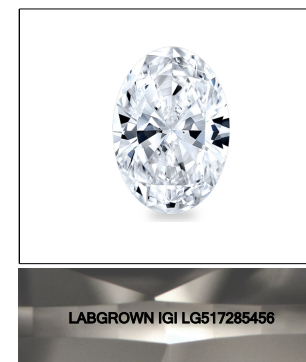
| | | | | | | |
|-----------------------------|------------------------------|-----------------------------|------------------------|-------------------|-----------|---|
| COLOR GRADING SCALE | CL | NC | FT | VL | LT | |
| | COLORLESS D-F | NEAR COLORLESS G-J | FAINT K-M | VERY LIGHT N-R | LIGHT S-Z | |
| CLARITY (10x) GRADING SCALE | FL | IF | VVS | VS | SI | I |
| | FLAWLESS INTERNALLY FLAWLESS | VERY VERY SLIGHTLY INCLUDED | VERY SLIGHTLY INCLUDED | SLIGHTLY INCLUDED | INCLUDED | |

CLARITY CHARACTERISTICS



KEY TO SYMBOLS

Red symbols indicate internal characteristics.
Green symbols indicate external characteristics.



LASERSCRIBESM
Sample Image Used

February 23, 2022

IGI Report Number **LG517285456**

Description **LABORATORY GROWN DIAMOND**

Shape and Cutting Style **OVAL BRILLIANT**

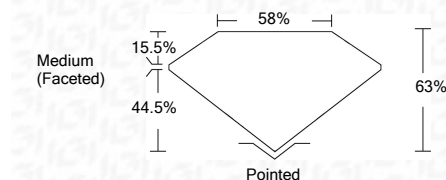
Measurements **8.54 X 6.08 X 3.83 MM**

GRADING RESULTS

Carat Weight **1.23 CARAT**

Color Grade **E**

Clarity Grade **VVS 2**



ADDITIONAL GRADING INFORMATION

Polish **EXCELLENT**

Symmetry **EXCELLENT**

Fluorescence **NONE**

Inscription(s) **LABGROWN IGI LG517285456**

Comments: As Grown - No indication of post-growth treatment.
This Laboratory Grown Diamond was created by High Pressure High Temperature (HPHT) growth process.
Type II

February 23, 2022

IGI Report Number **LG517285456**

Description **LABORATORY GROWN DIAMOND**

Shape and Cutting Style **OVAL BRILLIANT**

Measurements **8.54 X 6.08 X 3.83 MM**

GRADING RESULTS

Carat Weight **1.23 CARAT**

Color Grade **E**

Clarity Grade **VVS 2**

ADDITIONAL GRADING INFORMATION

Polish **EXCELLENT**

Symmetry **EXCELLENT**

Fluorescence **NONE**

Inscription(s) **LABGROWN IGI LG517285456**

Comments: As Grown - No indication of post-growth treatment.
This Laboratory Grown Diamond was created by High Pressure High Temperature (HPHT) growth process.
Type II



| | | | | |
|----------------------------|----------------------------|-----------------------|------------------|--|
| February 23, 2022 | IGI Report No. LG517285456 | 1.23 CARAT | E | Pointed |
| IGI Report No. LG517285456 | OVAL BRILLIANT | 8.54 X 6.08 X 3.83 MM | VVS 2 | EXCELLENT |
| Carat Weight | Color Grade | Clarity Grade | Depth | EXCELLENT |
| 8.54 X 6.08 X 3.83 MM | E | VVS 2 | 63% | EXCELLENT |
| | | | 58% | EXCELLENT |
| | | | Medium (Faceted) | NONE |
| | | | | LABGROWN IGI LG517285456 |
| | | | | Comments: |
| | | | | As Grown - No indication of post-growth treatment. |
| | | | | This Laboratory Grown Diamond was created by High Pressure High Temperature (HPHT) growth process. |
| | | | | Type II |